

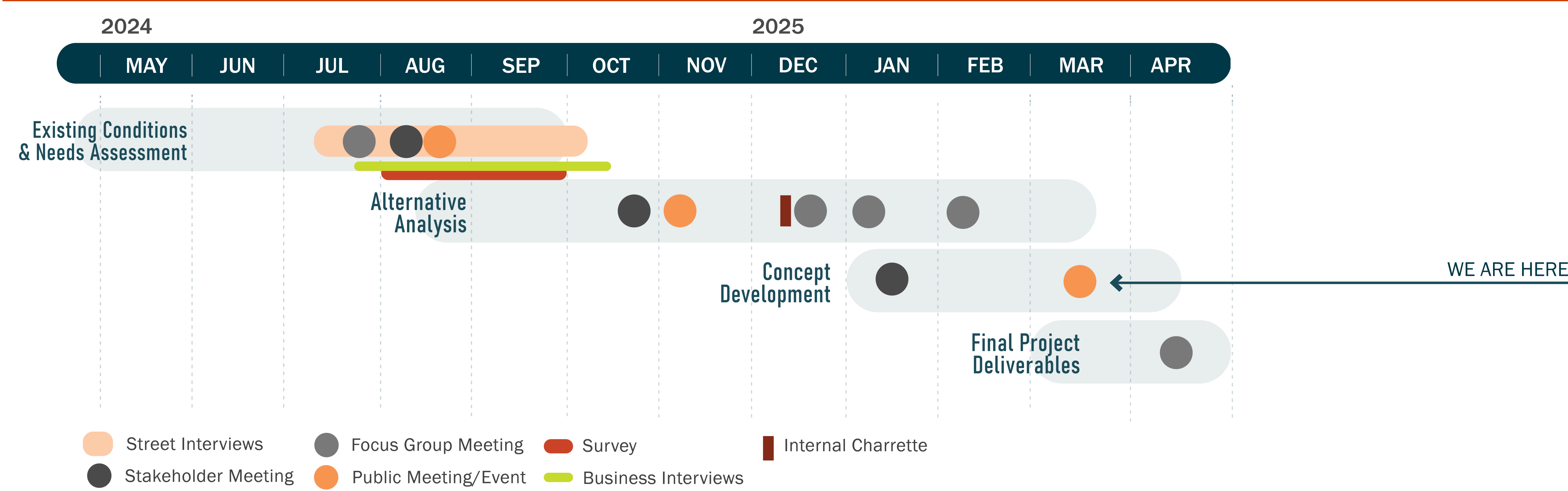
Study Overview

The Factory Shoals Pedestrian Bridge Study is an initiative of Cobb County Department of Transportation, which aims to evaluate needs and community goals to enhance mobility and pedestrian safety on the Factory Shoals Bridge over I-20. The study focuses on maximizing safety, connectivity, efficiency, and equitable transportation both at the bridge location and in the surrounding area.

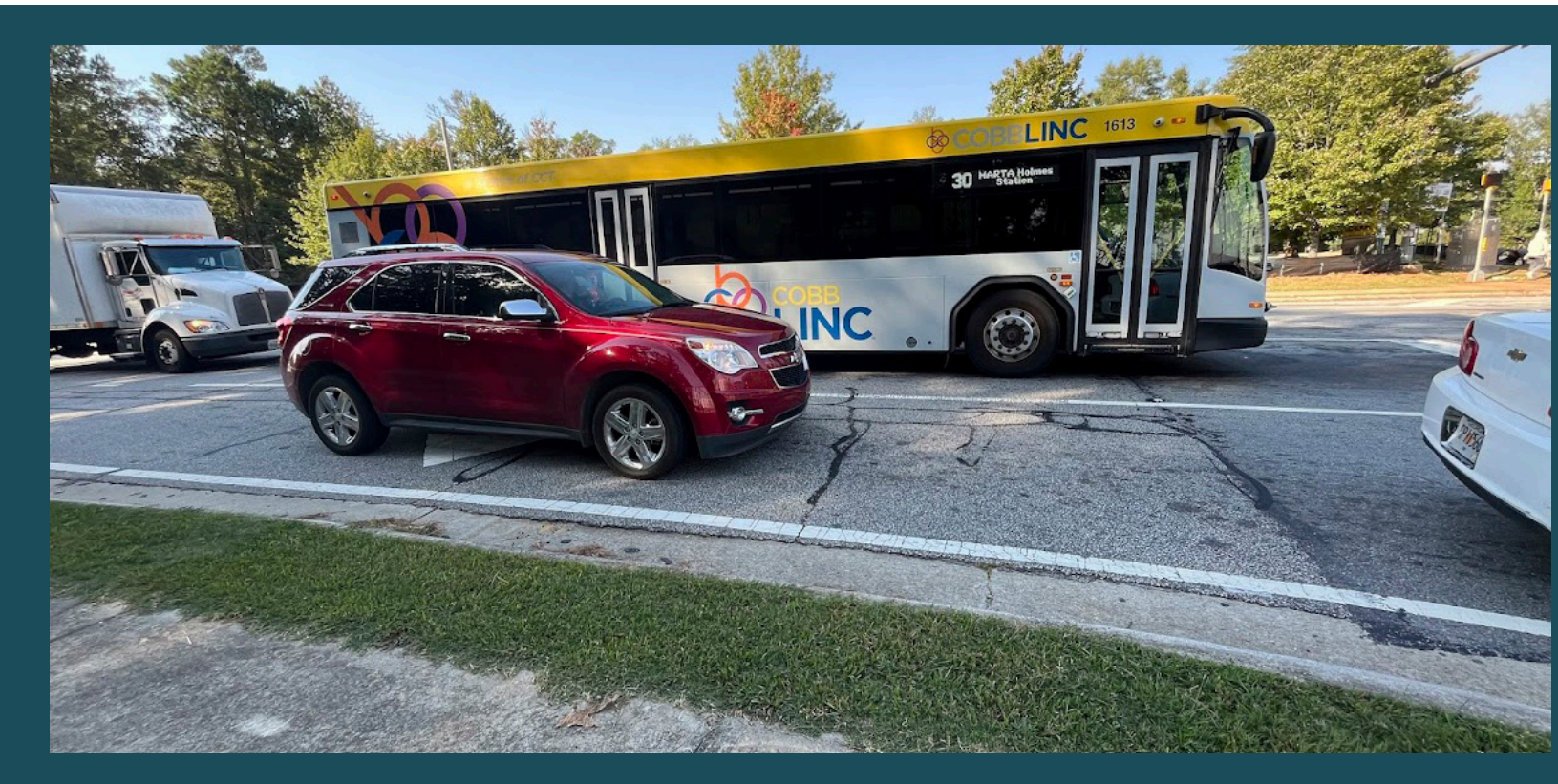
3 KEY PHASES

- 1. Existing Conditions & Needs Assessment
- 2. Alternatives Analysis
- 3. Concept Development & Final Deliverables

Schedule



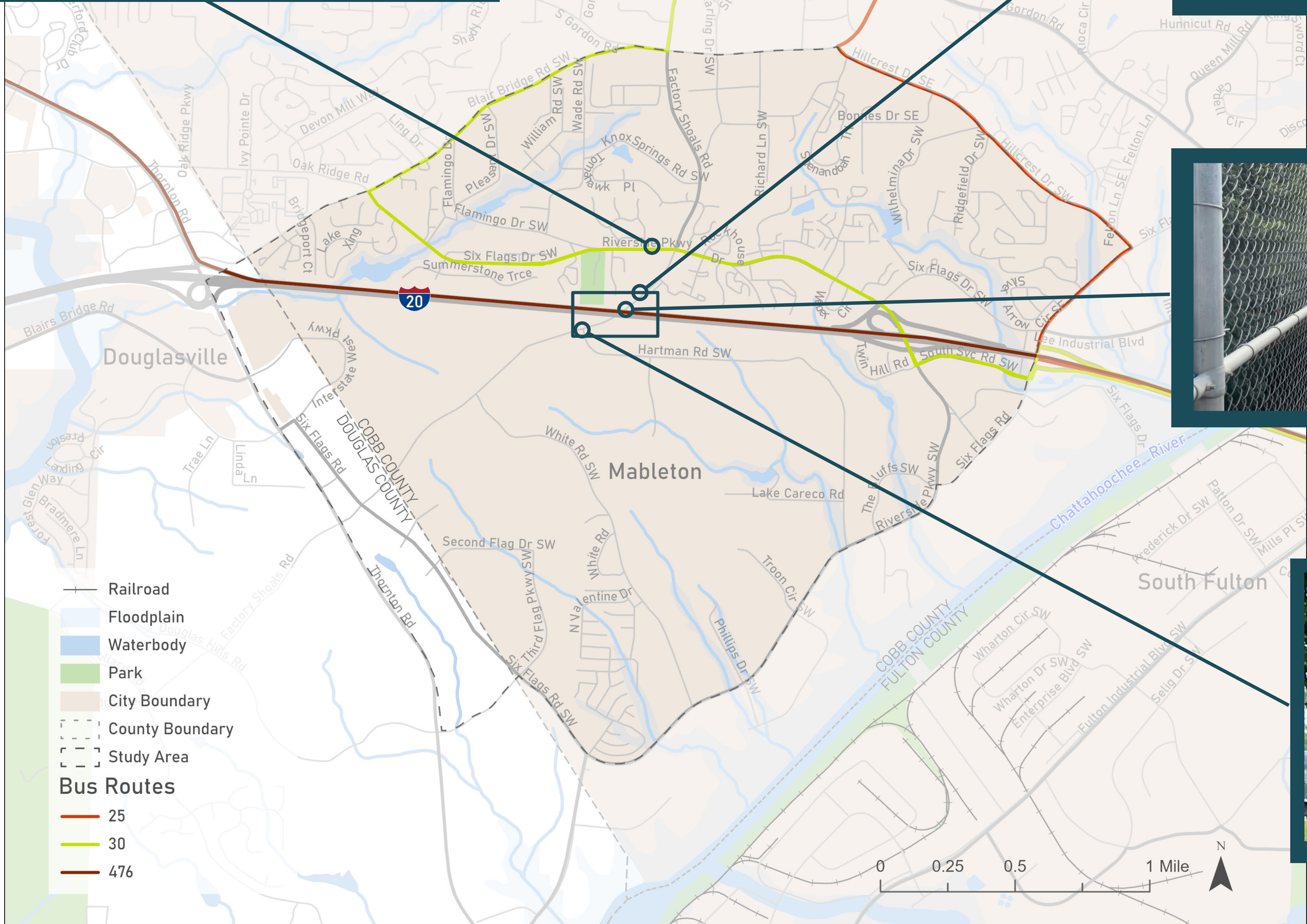
Study Area



Cobb LINC bus, just west of Factory Shoals Rd, along Riverside Pkwy



Factory Shoals Rd, just north of I-20 bridge



Truck crossing Factory Shoals bridge over I-20

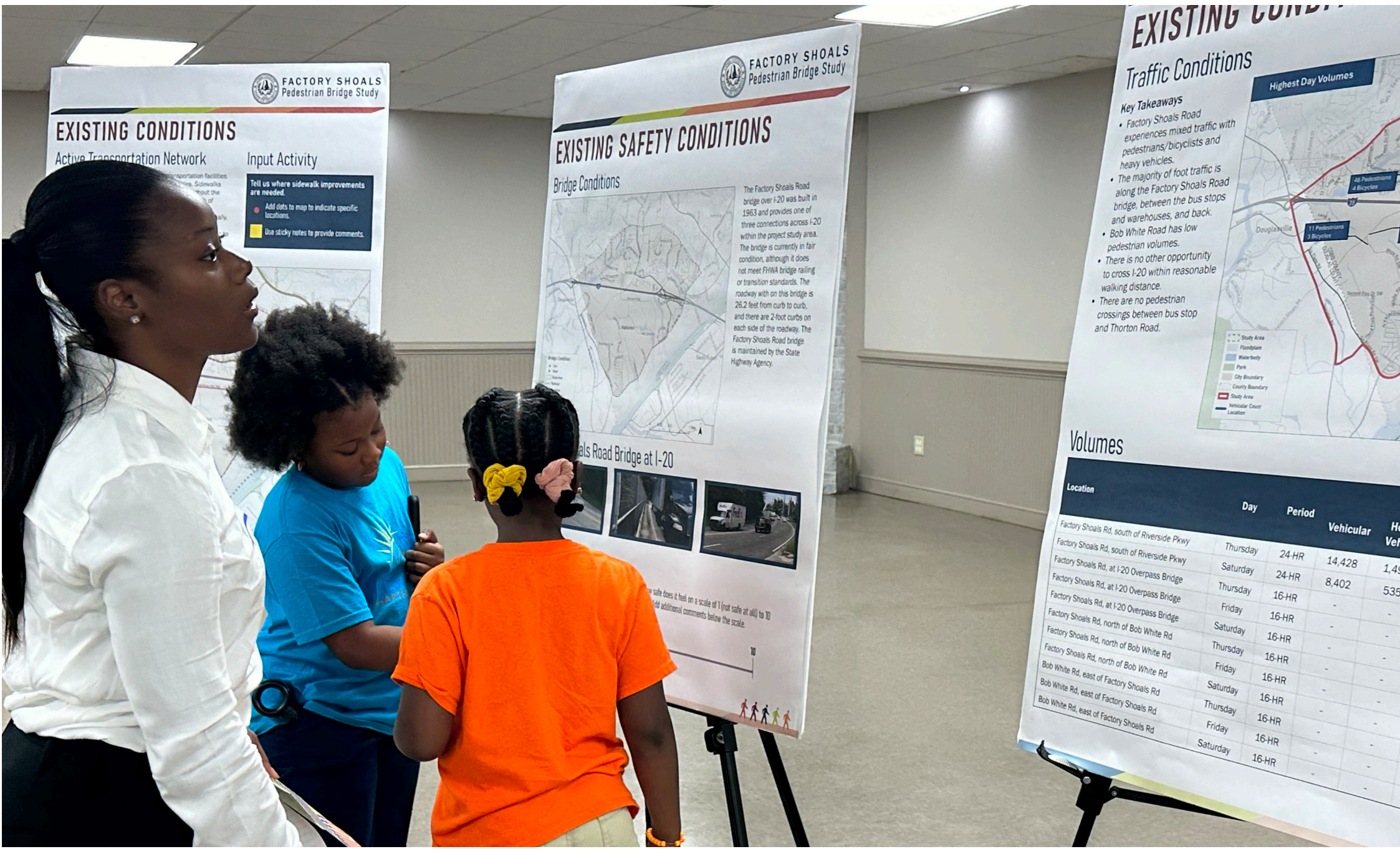


Truck turning off Hartman Rd on to Factory Shoals Rd, going north

Community Engagement Highlights

Activities ○○○○○

- Stakeholder Group Meetings (August, October, January)
- Public Kick off Meeting (August)
- Street Interviews (August, October)
- Community Survey (August - September)
- Community Booth at South Cobb Rec Center (November)
- Focus Group Meetings (December - February)
- Employer Interviews (August - November)



Street Interviews



The study team spent 12 hours in the study area talking with pedestrians and cyclists and observing the interaction of cars and people on foot and bike.

Interviews took place just north and south of the Factory Shoals Road bridge over I-20 and at bus stops on Riverside Parkway nearest to Factory Shoals Road. Observations occurred over five days and five different time periods. The team spoke with 36 people.

OBSERVATIONS

- Mix of ages and ethnicities crossing I-20 bridge.
 - Combination of pedestrians, bike riders, bus riders, and a skateboarder.
 - People from apartment complex north of bridge are also crossing the bridge.
- ### INPUT HIGHLIGHTS
- Key concerns include unsafe conditions on bridge, lack of lighting, and lack of crosswalks on Factory Shoals Road.
 - Most people commuting to/from work when crossing I-20.
 - Several freight trucks, buses, and cars travel at high speeds along Factory Shoals Road.

Stakeholder Groups

- Austell Community Taskforce
- City of Mableton
- Cobb County Department of Community Development
- Cobb County Department of Transportation
- Cobb County Fire Marshall’s Office
- Cobb County Police Department
- Cobb County School District
- Mableton Development Authority
- Mableton Improvement Coalition
- Riverside EpiCenter
- South Cobb Recreation Center
- We Thrive Riverside Renters Association



Focus Group Meetings

- Austell Community Task Force
- Destiny World Church & Residents
- Mableton Development Authority
- South Cobb Business Association

Identified Needs ○○○○○

- **Safety Upgrades for the Bridge:** Install modern railings and improve transitions to meet current safety standards. Add dedicated pedestrian and bicycle facilities.
- **Traffic Management:** Implement measures to manage truck traffic and reduce congestion at key intersections, especially at I-20 access points.
- **Enhanced Pedestrian and Bicycle Infrastructure:** Extend sidewalks and bike lanes, especially near commercial zones and along the I-20 bridge. Improve lighting and safety measures along pedestrian routes,
- **Public Transit Improvements:** Strengthen last-mile connectivity between transit stops and residential/employment centers. Consider infrastructure enhancements like shelters and crosswalks near high-ridership stops.
- **Freight and Industrial Traffic Management:** Consideration of dedicated truck lanes, better signage, and intersection redesign to minimize impact of freight on local traffic. Strengthen or resurface key sections of Factory Shoals Road and Riverside Parkway to accommodate the high volumes of freight vehicles.
- **Equitable Access and Community Connectivity:** Improve transit services and pedestrian infrastructure in areas with higher percentages of low-income and vehicle-less households. Areas should be well lit and serve as community assets.